

Refrigerators & Freezers

Ver. 2015 ~ 2016

Best Products for Reliable Results

JEIO TECH was established in 1988 with the goal of delivering the best laboratory equipments for the reliable results. We always strive to develop high technology with ergonomic design for better products. We are eager to take on new challenges in developing a product the best suits you!

Our reliable instruments will offer you analytical solutions in the field of biology , chemistry, medicine, pharmacology and so forth. We are driven by innovation and our extensive product lines are at the cutting-edge globally in both scientific and industrial research instrument markets.

While continuously focusing on human resources and technology, development, we strive to make a significant difference in various research areas. our top priority is to provide the world's best products and services through outstanding quality and customer satisfaction at affordable prices.

We hope you enjoy the discovery of JeioTech and it's products.



Contents



Laboratory Refrigerators 2 to 10°C

CLG-150 / CLG-300 / CLG-650 / CLG-850 / CLG-1400

Blood Bank Refrigerators 4°C

BSR-300 / BSR-650

Pharmacy Refrigerators 2 to 10°C

PSR-300 / PSR-650

Laboratory Freezers -35 to 0°C

-15 to 0°C FHG-150 / FHG-300 / FHG-650

-25 to -15°C FMG-150 / FMG-300 / FMG-650

-35 to -25°C FCG-150 / FCG-300 / FCG-650

-50 to -35°C FDG-300 / FDG-650

Plasma Freezers -40 to -25°C

BSF-300 / BSF-650

Technical Benefit

Optimum Control Features

Precision



Easy temperature unit conversion
between °C and °F

CPU logic control system
offering precise temperature control
as well as high energy efficiency

Optimizing defrost system



Automatic defrost system manages
the defrost cycle (except for CLG-850, 1400)

Manual defrost system also allows
for immediate control (except for CLG)

Auto-dialing remote alarm



Auto-dialing remote alarm to alert abnormal temp.
changes or power failure with audible alarm

(except for CLG Series)
(optional for FHG/FMG/FCG/FDG, standard for BSR/BSF/PSR)

High as well as low temperature alerts
when the temp. exceeds the set temp. limits

Two separate fuses protecting against overcurrent

Open door alert and Built-in door lock

Dual temperature controllers for
safe medical samples' storage
(only for BSR, BSF, PSR)

Safety features

Safety

Intuitive and easy-to-operate
control panel with vivid and colorful VFD,
touch-sensitive buttons, and a jog dial

Keypad lock button preventing
inadvertent parameter changes

Convenient control



Clear observation



Double-pane tempered glass door with built-in wire heater providing clear inside view of the chambers
(for the models with glass doors only)

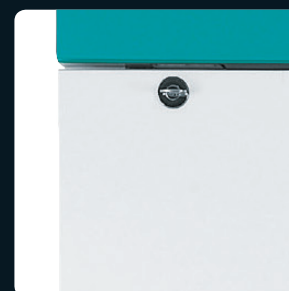
High-quality 304 grade stainless steel chamber interior and dirt-repellent external surface with powder coating

Each chamber comes with shelves or drawers together to improve user's work efficiency

Convenient maintenance



Safety Storage



Fully insulated chamber with built-in door lock ensures minimal chamber temperature fluctuation and safe storage of sensitive sample and specimens

Easy transport and settling



Casters comes standard with the laboratory refrigeration units allowing easy transport and installation
(except for 150 Models)



Laboratory Refrigerators

CLG-150/300/650/850/1400 (2 to 10°C)

Ideal for research, and industrial laboratories

Eco-friendly lab refrigeration systems with advanced safety features providing stable refrigerated environments



CLG models with the optional recorders

Model		CLG-150	CLG-300	CLG-650	CLG-850	CLG-1400
Chamber Volume (L / cu ft)		156 / 5.5	303 / 10.7	603 / 21.3	805 / 28.4	1327 / 46.9
Temperature Range (°C / °F)		2 to 10 / 35.6 to 50				
Refrigerator (Hp)		1/8	1/6	1/4	1/6×2ea	1/4×2ea
No. of Wire Shelves (included / max.)		2 / 6	3 / 11	3 / 17	3 / 17	6 / 34
No. of Wire Shelves, Slide (max., optional)		4	7	11	11	22
No. of Drawer Shelves, Slide (max., optional)		3	5	8	8	16
Max. Load per Shelf (kg / lbs)		26 / 57.3		30 / 66.1		
Material	Interior	Stainless steel #304				
	Exterior	Steel, 1 mm, powder coating				
	Insulation	60mm, Polyurethane foam				
Dimension (W×D×H)	Interior (mm / inch)	550×580×490 / 21.7×22.8×19.3	550×550×1000 / 21.7×21.7×39.4	650×640×1450 / 25.6×25.2×57.1	750×740×1450 / 29.5×29.1×57.1	1430×640×1450 / 56.3×25.2×57.1
	Exterior (mm / inch)	683×791×870 / 26.9×31.1×34.4	670×770×1515 / 26.4×30.3×59.6	770×865×1965 / 30.3×34.1×77.4	870×965×1965 / 34.3×37.9×77.4	1550×865×1965 / 61×34.1×77.4
	Net Weight (kg / lbs)	100 / 220.4	130 / 286.6	210 / 463	260 / 573.2	350 / 771.6
Electrical Requirements (230V, 60Hz)		2A	2.3 A	4A	5A	6A
Cat. No.	Solid Door Type	AAHE1001K	AAHE1011K	AAHE1021K	AAHE1031K	AAHE1041K
	Glass Door Type	AAHE1101K	AAHE1111K	AAHE1121K	AAHE1131K	AAHE1141K
Electrical Requirements (230V, 50Hz)		2A	2.3 A	4A	5A	6A
Cat. No.	Solid Door Type	AAHE1002K	AAHE1012K	AAHE1022K	AAHE1032K	AAHE1042K
	Glass Door Type	AAHE1102K	AAHE1112K	AAHE1122K	AAHE1132K	AAHE1142K
Electrical Requirements (120V, 60Hz)		4A	4.5 A	6.5 A	9A	13A
Cat. No.	Solid Door Type	AAHE1003U	AAHE1013U	AAHE1023U	AAHE1033U	AAHE1043U
	Glass Door Type	AAHE1103U	AAHE1113U	AAHE1123U	AAHE1133U	AAHE1143U



Automatic shutdown of fan for minimization of heat loss when the door is opened

Over current protection

High and low temp. alerts

Key pad button lock function

Open door alert

built in door lock

Intuitive and easy-to-operate control panel with vivid and colorful VFD, touch-sensitive buttons

CPU logic control system offering precise temperature control as well as high energy efficiency

Innovative auto-defrost system automatically activated when detecting trace amount of frost build-up in the evaporator (only for CLG-150, 300, 650 models)

High-quality 304 grade stainless steel chamber interior and dirt-repellent external surface with powder coating

Energy efficiency, long life span LED lighting

Double-pane tempered glass door with built-in wire heater providing clear inside view of the chambers (for the models with glass doors only)

Magnetic seal for absorbing impact from closing the door

Fully insulated chamber ensuring minimal chamber's temperature fluctuation

Built-in 50mm diameter cable port for external probes or wires (except for CLG-150 Model)

High thermal efficiency evaporation system, made of low corrosive materials

Built-in casters for easy transport (except for CLG-150 Model)

Three types of recorders (optional)

- Dot recorder (6 point)
- Chart recorder (6", 24hr/7days)
- Thermal line recorder

STANDARD

- Wire Shelves

Blood Bank Refrigerators

BSR-300/650 (4°C)

Ideal for safe storage of valuable blood products

Superior temperature uniformity with various safety functions to meet strict requirements on medical appliances (DIN 58371)



Automatic Defrost **Manual Defrost**



Model		BSR-300	BSR-650	
Chamber Volume (L / cu ft)		303 / 10.7	614 / 21.7	
Temperature Range (℃ / °F)		4 / 39.2		
Refrigerator (Hp)		1/6	1/3	
No. of Drawer Shelves, Slide (included / max.)		4 / 4	6 / 6	
Max. Load per Shelf (kg / lbs)		26 / 57.3	30 / 66.1	
Material	Interior	Stainless steel #304		
	Exterior	Steel, 1 mm, powder coating		
	Insulation	60mm, Polyurethane foam		
Dimension (W×D×H)	Interior (mm / inch)	550×550×1000 / 21.7×21.7×39.4	700×640×1370 / 27.6×25.2×53.9	
	Exterior (mm / inch)	670×770×1515 / 26.4×30.3×59.6	820×860×1885 / 32.3×33.9×74.2	
	Net Weight (kg / lbs)	130 / 286.6	210 / 463	
Electrical Requirements (230V)		50/60Hz, 2.8A	50Hz, 3.8A	60Hz, 3.8A
Cat. No.		AAHE4105K	AAHE4112K	AAHE4111K
Electrical Requirements (120V)		60Hz, 5.5A	60Hz, 7.5A	
Cat. No.		AAHE4103U	AAHE4113K	

1) Technical data according to DIN 58371.

※ Permissible environmental conditions: temperature (15 to 30°C) and relative humidity (up to 85%).



Dual temperature controllers for safe blood storage
(If one controller fails to adjust temp, then the other activates to counteract the failure)

Battery back up for emergency caused by power failures

Automatic shutdown of fan for minimization of heat loss when the door is opened

Over current protection

High and low temp. alerts

Key pad button lock function

Open door alert, built in door lock

Intuitive and easy-to-operate control panel with vivid and colorful VFD, touch-sensitive buttons

CPU logic control system offering precise temperature control as well as high energy efficiency

Innovative auto-defrost system automatically activated when detecting trace amount of frost build-up in the evaporator

Additional manual defrost system for immediate frost removal

High-quality 304 grade stainless steel chamber

Energy efficiency, long life span LED lighting

Double-pane tempered glass door with built-in wire heater providing clear inside view of the chambers

Magnetic seal for absorbing impact from closing the door

Included sliding drawers, ensuring easy to reach and storing of samples and added convenience for cleaning or maintenance
(4 ea for BSR-300, 6 ea for BSR-650)

Fully insulated chamber ensuring minimal chamber's temperature fluctuation

High thermal efficiency evaporation system, made of low corrosive materials

Equipped with an auto-dialing remote alarm to alert abnormal temperature changes or power failures, with audible alarm

Precise documentation is available by the included chart type recorder

STANDARD

• Chart Type Recorder, Auto Dialing Remote System, Slide Drawers

Pharmacy Refrigerators

PSR-300/650 (2 to 10°C)

Ideal for pharmaceutical, clinical laboratories

Eco-friendly lab refrigeration systems with advanced safety features providing stable refrigerated environments (DIN 58345)



Automatic Defrost

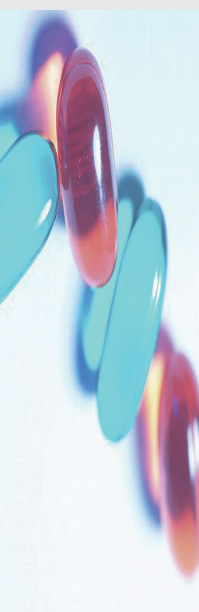
Manual Defrost



Model		PSR-300	PSR-650
Chamber Volume (L / cu ft)		303 / 10.7	614 / 21.7
Temperature Range (°C / °F)		2 to 10 / 35.6 to 50	
Refrigerator (Hp)		1/6	1/3
No. of Drawer Shelves, Slide (included / max.)		4 / 4	6 / 6
Max. Load per Shelf (kg / lbs)		26 / 57.3	30 / 66.1
Material	Interior	Stainless steel #304	
	Exterior	Steel, 1 mm, powder coating	
	Insulation	60mm, Polyurethane foam	
Dimension (WxDxH)	Interior (mm / inch)	550x550x1000 / 21.7x21.7x39.4	700x640x1370 / 27.6x25.2x53.9
	Exterior (mm / inch)	670x770x1515 / 26.4x30.3x59.6	820x860x1885 / 32.3x33.9x74.2
	Net Weight (kg / lbs)	130 / 286.6	210 / 463
Electrical Requirements (230V)		50/60Hz, 2.8A	50Hz, 3.8A 60Hz, 3.8A
Cat. No.		AAHE6015K	AAHE6022K AAHE6021K
Electrical Requirements (120Hz)		60Hz, 5.5A	60Hz, 7.5A
Cat. No.		AAHE6013U	AAHE6023U

1) Technical data according to DIN 58345.

※ Permissible environmental conditions: temperature (15 to 30°C) and relative humidity (up to 85%).



Dual temperature controllers for safe blood storage

(If one controller fails to adjust temp, then the other activates to counteract the failure)

Battery back up for emergency caused by power failures

Automatic shutdown of fan for minimization of heat loss when the door is opened

Over current protection

High and low temp. alerts

Key pad button lock function

Open door alert, built in door lock

Intuitive and easy-to-operate control panel with vivid and colorful VFD, touch-sensitive buttons

CPU logic control system offering precise temperature control as well as high energy efficiency

Innovative auto-defrost system automatically activated when detecting trace amount of frost build-up in the evaporator

Additional manual defrost system for immediate frost removal

High-quality 304 grade stainless steel chamber

Energy efficiency, long life span LED lighting

Double-pane tempered glass door with built-in wire heater providing clear inside view of the chambers

Magnetic seal for absorbing impact from closing the door

Included sliding drawers, ensuring easy to reach and storing of samples and added convenience for cleaning or maintenance
(4 ea for PSR-300, 6 ea for PSR-650)

Fully insulated chamber ensuring minimal chamber's temperature fluctuation

High thermal efficiency evaporation system, made of low corrosive materials

Equipped with an auto-dialing remote alarm to alert abnormal temperature changes or power failures, with audible alarm

Precise documentation is available by the included chart type recorder

STANDARD

- Chart Type Recorder, Auto Dialing Remote System, Slide Drawers

Laboratory Freezers

FHG-150/300/650 (-15 to 0°C)

FHG models can store samples in a temperature range down to -15°C

Three size models are available for routine sample protection where lab space is limited.



FHG models with the optional recorders



Model		FHG-150	FHG-300	FHG-650
Chamber Volume (L / cu ft)		154 / 5.4	303 / 10.7	647 / 22.8
Temperature Range (°C / °F)		-15 to 0 / 5 to 32		
Refrigerator (Hp)		1/3	1/3	1/3
No. of Wire Shelves (included / max.)		2 / 6	3 / 11	3 / 17
No. of Wire Shelves, Slide (max., optional)		4	7	11
No. of Drawer Shelves, Slide (max., optional)		3	5	8
Max. Load per Shelf (kg / lbs)		26 / 57.3		30 / 66.1
Material	Interior / Exterior	Stainless steel #304 / Steel, 1 mm, powder coating		
	Insulation	100mm, Polyurethane foam		
Dimension (WxDxH)	Interior (mm / inch)	550x570x490 / 21.7x22.4x19.3	550x550x1000 / 21.7x21.7x39.4	700x675x1370 / 27.6x26.6x53.9
	Exterior (mm / inch)	763x815x1055 / 30x32.1x41.5	765x760x1650 / 30.1x29.9x64.9	915x885x2020 / 36x34.8x79.5
	Net Weight (kg / lbs)	120 / 264.6	150 / 330.7	230 / 507.1
Electrical Requirements (230V, 60Hz)		3.5A	3.8A	3.8A
Cat. No.		AAHE2101K	AAHE2111K	AAHE2121K
Electrical Requirements (230V, 50Hz)		3.5A	3.8A	3.8A
Cat. No.		AAHE2102K	AAHE2112K	AAHE2122K

1) Technical data according to DIN 12880.

※ Permissible environmental conditions: temperature (18 to 30°C) and relative humidity (up to 85%).



Automatic shutdown of fan for minimization of heat loss when the door is opened

Over current protection

High and low temp. alerts

Key pad button lock function

Open door alert

built in door lock

Intuitive and easy-to-operate control panel with vivid and colorful VFD, touch-sensitive buttons

CPU logic control system offering precise temperature control as well as high energy efficiency

Innovative auto-defrost system automatically activated when detecting trace amount of frost build-up in the evaporator

Additional manual defrost system for immediate frost removal

High-quality 304 grade stainless steel chamber interior and dirt-repellent external surface with powder coating

Air-tight seal for absorbing impact from closing the door

Fully insulated chamber ensuring minimal chamber's temperature fluctuation

Built-in casters for easy transport (except for FHG-150 Model)

Auto dialing remote alarm to alert abnormal temperature changes or power failures, with audible alarm (optional)

Three types of recorders (optional)

- Dot recorder (6 point)
- Chart recorder (6", 24hr/7days)
- Thermal line recorder

STANDARD

- Wire Shelves

Laboratory Freezers

FMG-150/300/650 (-25 to -15°C)

FMG models can store samples in a temperature range down to -25°C

A variety of safety functions and included door key lock will protect your critical laboratory samples



FMG models with the optional recorders

Model		FMG-150	FMG-300	FMG-650
Chamber Volume (L / cu ft)		154 / 5.4	303 / 10.7	647 / 22.8
Temperature Range (°C / °F)		-25 to -15 / -13 to 5		
Refrigerator (Hp)		1/2	1/2	3/8
No. of Wire Shelves (included / max.)		2 / 6	3 / 11	3 / 17
No. of Wire Shelves, Slide (max., optional)		4	7	11
No. of Drawer Shelves, Slide (max., optional)		3	5	8
Max. Load per Shelf (kg / lbs)		26 / 57.3		30 / 66.1
Material	Interior / Exterior	Stainless steel #304 / Steel, 1 mm, powder coating		
	Insulation	100mm, Polyurethane foam		
Dimension (WxDxH)	Interior (mm / inch)	550x570x490 / 21.7x22.4x19.3	550x550x1000 / 21.7x21.7x39.4	700x675x1370 / 27.6x26.6x53.9
	Exterior (mm / inch)	763x815x1055 / 30x32.1x41.5	765x760x1650 / 30.1x29.9x64.9	915x885x2020 / 36x34.8x79.5
	Net Weight (kg / lbs)	120 / 264.6	150 / 330.7	233 / 513.7
Electrical Requirements (230V, 60Hz)		4.5A	4.8A	5.5A
Cat. No.		AAHE2201K	AAHE2211K	AAHE2221K
Electrical Requirements (230V, 50Hz)		4.5A	4.8A	5.5A
Cat. No.		AAHE2202K	AAHE2212K	AAHE2222K

1) Technical data according to DIN 12880.

※ Permissible environmental conditions: temperature (18 to 30°C) and relative humidity (up to 85%).



Automatic shutdown of fan for minimization of heat loss when the door is opened

Over current protection

High and low temp. alerts

Key pad button lock function

Open door alert

built in door lock

Intuitive and easy-to-operate control panel with vivid and colorful VFD, touch-sensitive buttons

CPU logic control system offering precise temperature control as well as high energy efficiency

Innovative auto-defrost system automatically activated when detecting trace amount of frost build-up in the evaporator

Additional manual defrost system for immediate frost removal

High-quality 304 grade stainless steel chamber interior and dirt-repellent external surface with powder coating

Air-tight seal for absorbing impact from closing the door

Fully insulated chamber ensuring minimal chamber's temperature fluctuation

Built-in casters for easy transport (except for FMG-150 Model)

Auto dialing remote alarm to alert abnormal temperature changes or power failures, with audible alarm (optional)

Three types of recorders (optional)

- Dot recorder (6 point)
- Chart recorder (6", 24hr/7days)
- Thermal line recorder

STANDARD

• Wire Shelves

Laboratory Freezers

FCG-150/300/650 (-35 to -25°C)

FCG models can store samples in a temperature range down to -35°C

Additionally equipped with a manual defrost function for storage of sensitive sample and specimens



FCG models with the optional recorders



Model		FCG-150	FCG-300	FCG-650
Chamber Volume (L / cu ft)		154 / 5.4	303 / 10.7	647 / 22.8
Temperature Range (°C / °F)		-35 to -25 / -31 to -13		
Refrigerator (Hp)		3/4	1	1-1/2
No. of Wire Shelves (included / max.)		2 / 6	3 / 11	3 / 17
Max. Load per Shelf (kg / lbs)		26 / 57.3		30 / 66.1
Material	Interior / Exterior	Stainless steel #304 / Steel, 1 mm, powder coating		
	Insulation	100mm, Polyurethane foam		
Dimension (WxDxH)	Interior (mm / inch)	550x570x490 / 21.7x22.4x19.3	550x550x1000 / 21.7x21.7x39.4	700x675x1370 / 27.6x26.6x53.9
	Exterior (mm / inch)	763x815x1055 / 30x32.1x41.5	765x760x1650 / 30.1x29.9x64.9	915x885x2020 / 36x34.8x79.5
	Net Weight (kg / lbs)	123 / 271.2	155 / 341.7	238 / 524.7
Electrical Requirements (230V, 60Hz)		6A	7.5A	10.5A
Cat. No.		AAHE2301K	AAHE2311K	AAHE2321K
Electrical Requirements (230V, 50Hz)		6A	7.5A	10.5A
Cat. No.		AAHE2302K	AAHE2312K	AAHE2322K

1) Technical data according to DIN 12880.

※ Permissible environmental conditions: temperature (18 to 30°C) and relative humidity (up to 85%).



Automatic shutdown of fan for minimization of heat loss when the door is opened

Over current protection

High and low temp. alerts

Key pad button lock function

Open door alert

built in door lock

Intuitive and easy-to-operate control panel with vivid and colorful VFD, touch-sensitive buttons

CPU logic control system offering precise temperature control as well as high energy efficiency

Innovative auto-defrost system automatically activated when detecting trace amount of frost build-up in the evaporator

Additional manual defrost system for immediate frost removal

High-quality 304 grade stainless steel chamber interior and dirt-repellent external surface with powder coating

Air-tight seal for absorbing impact from closing the door

Fully insulated chamber ensuring minimal chamber's temperature fluctuation

Built-in casters for easy transport (except for FCG-150 Model)

Auto dialing remote alarm to alert abnormal temperature changes or power failures, with audible alarm (optional)

Three types of recorders (optional)

- Dot recorder (6 point)
- Chart recorder (6", 24hr/7days)
- Thermal line recorder



- Wire Shelves

Laboratory Freezers

FDG-300/650 (-50 to -35°C)

FDG models can store samples in a temperature range down to -50°C

Storage of your samples in the lower temperature condition with our laboratory Freezers included door key lock will protect your critical laboratory samples



FDG models with the optional recorders



Model		FDG-300	FDG-650
Chamber Volume (L / cu ft)		303 / 10.7	647 / 22.8
Temperature Range (°C / °F)		-50 to -35 / -58 to -31	
Refrigerator (Hp)		1/3 x 2	1/2 x 2
No. of Wire Shelves (included / max.)		3 / 11	3 / 17
Max. Load per Shelf (kg / lbs)		26 / 57.3	30 / 66.1
Material	Interior / Exterior	Stainless steel #304 / Steel, 1 mm, powder coating	
	Insulation	120mm, Polyurethane foam	
Dimension (WxDxH)	Interior (mm / inch)	550x550x1000 / 21.7x21.7x39.4	700x675x1370 / 27.6x26.6x53.9
	Exterior (mm / inch)	805x800x1690 / 31.7x31.5x66.5	955x925x2060 / 37.6x36.4x81.1
	Net Weight (kg / lbs)	180 / 396.8	280 / 617.3
Electrical Requirements (230V, 60Hz)		5.0A	6.5A
Cat. No.		AAHE2411K	AAHE2421K
Electrical Requirements (230V, 50Hz)		5.0A	6.5A
Cat. No.		AAHE2412K	AAHE2422K

1) Technical data according to DIN 12880.

※ Permissible environmental conditions: temperature (18 to 30°C) and relative humidity (up to 85%).



Automatic shutdown of fan for minimization of heat loss when the door is opened

Over current protection

High and low temp. alerts

Key pad button lock function

Open door alert

built in door lock

Intuitive and easy-to-operate control panel with vivid and colorful VFD, touch-sensitive buttons

CPU logic control system offering precise temperature control as well as high energy efficiency

Innovative auto-defrost system automatically activated when detecting trace amount of frost build-up in the evaporator

Additional manual defrost system for immediate frost removal

High-quality 304 grade stainless steel chamber interior and dirt-repellent external surface with powder coating

Air-tight seal for absorbing impact from closing the door

Fully insulated chamber ensuring minimal chamber's temperature fluctuation

Built-in casters for easy transport

Auto dialing remote alarm to alert abnormal temperature changes or power failures, with audible alarm (optional)

Three types of recorders (optional)

- Dot recorder (6 point)
- Chart recorder (6", 24hr/7days)
- Thermal line recorder

STANDARD

- Wire Shelves

Plasma Freezers

BSF-300/650 (-40°C to -25°C)

The most suitable environments for sensitive plasma freezing

Wide temperature range down to -40°C and high advanced safety functions satisfying the high medical standards (DIN 58375)



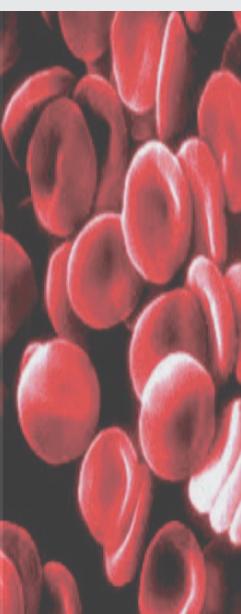
Automatic Defrost **Manual Defrost**



Model		BSF-300		BSF-650	
Chamber Volume (L / cu ft)		303 / 10.7		647 / 22.8	
Temperature Range (°C / °F)		-40 to -25 / -40 to -13			
Refrigerator (Hp)		1		1-1/2	
No. of Drawer Shelves, Slide (included / max.)		4 / 4		6 / 6	
Max. Load per Shelf (kg / lbs)		26 / 57.3		30 / 66.1	
Material	Interior	Stainless steel #304			
	Exterior	Steel, 1 mm, powder coating			
	Insulation	100mm, Polyurethane foam			
Dimension (WxDxH)	Interior (mm / inch)	550x550x1000 / 21.7x21.7x39.4		700x675x1370 / 27.6x26.6x53.9	
	Exterior (mm / inch)	765x760x1650 / 30.1x29.9x64.9		915x885x2020 / 36x34.8x79.5	
	Net Weight (kg / lbs)	150 / 331		240 / 529	
Electrical Requirements (230V)		50Hz, 5.5A	60Hz, 5.5A	50Hz, 7.5A	60Hz, 7.5A
Cat. No.		AAHE5102K	AAHE5101K	AAHE5112K	AAHE5111K
Electrical Requirements (120V)		60Hz, 11A			
Cat. No.		AAHE5103U		-	

1) Technical data according to DIN 58375.

※ Permissible environmental conditions: temperature (15 to 30°C) and relative humidity (up to 85%).



Dual temperature controllers for safe blood storage
(If one controller fails to adjust temp, then the other activates to counteract the failure)

Battery back up for emergency
caused by power failures

Over current protection

High and low temp. alerts

Key pad button lock function

Open door alert, built in door lock

Intuitive and easy-to-operate control panel with vivid and colorful VFD, touch-sensitive buttons

CPU logic control system
offering precise temperature control as well as high energy efficiency

Innovative auto-defrost system
automatically activated when detecting trace amount of frost build-up in the evaporator

Additional manual defrost system
for immediate frost removal

High-quality 304 grade stainless steel chamber

Air-tight seal for absorbing impact
from closing the door

Included sliding drawers, ensuring easy to reach and storing of samples and added convenience for cleaning or maintenance
(4 ea for BSF-300, 6 ea for BSF-650)

Fully insulated chamber
ensuring minimal chamber's temperature fluctuation

Equipped with an auto-dialing remote alarm
to alert abnormal temperature changes or power failures, with audible alarm

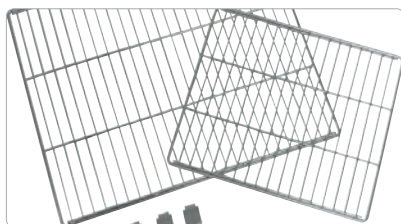
Precise documentation is available
by the included chart type recorder

STANDARD

↳ Chart Type Recorder, Auto Dialing Remote System, Slide Drawers

for Laboratory Cooling

Shelves



Wire Shelves



Wire Shelves (slide type)



Drawer Shelves (slide type)

Laboratory Refrigerators

Cat. No.	Description	CLG-150	CLG-300	CLG-650	CLG-850	CLG-1400
AAAE1511	Wire Shelves - flat type (included shelf bracket)	•	•	-	-	-
AAAE1512		-	-	•	-	•
AAAE1513		-	-	-	•	-
AAAE1514	Wire Shelves - slide type (included guide rail)	•	•	-	-	-
AAAE1515		-	-	•	-	•
AAAE1516		-	-	-	•	-
AAAE1517	Drawer Shelves - slide type (included guide rail)	•	•	-	-	-
AAAE1518		-	-	•	-	•
AAAE1519		-	-	-	•	-
AAA8T500	Recorder (dot type , 6 point)	•	•	•	•	•
AAAE1501	Recorder (chart type, 6", 24hr / 7day)	•	•	•	•	•
AAAE1502	Chart Recorder Paper (6", 60ea/1 package)	•	•	•	•	•
AAAE1503	Recorder (thermal line type)	•	•	•	•	•
AAAE1521	Cable Port	-	•	•	•	•
AAAE1531	Electric Outlet (120V-US style)	-	•	•	•	•
AAAE1532	Electric Outlet (230V-Korea style)	-	•	•	•	•
AAAJ7001	Cryo Box, CRB-25 (PC, 1.2 to 2.0ml x 25 holes,)	•	•	•	•	•
AAAJ7002	Cryo Box, CRB-81S (PC, 1.2 to 2.0ml x 81 holes)	•	•	•	•	•
AAAJ7003	Cryo Box, CRB-81T (PC, 5.0ml x 81 holes)	•	•	•	•	•
AAAJ7011	Storage Box, SRB-100 (PP, 1.2 to 2.0ml x 100 holes)	•	•	•	•	•

Laboratory Freezers

Cat. No.	Description	FHG-150 / FMG-150	FHG-300 / FMG-300	FHG-650 / FMG-650	FCG-150	FCG-300 / FDG-300	FCG-650 / FDG-650
AAAE1511	Wire Shelves - flat type (included shelf bracket)	•	•	-	•	•	-
AAAE1512		-	-	•	-	-	•
AAAE1514		•	•	-	-	-	-
AAAE1515	Wire Shelves - slide type (included guide rail)	-	-	•	-	-	-
AAAE1517	Drawer Shelves - slide type (included guide rail)	•	•	-	-	-	-
AAAE1518		-	-	•	-	-	-
AAA8T500	Recorder (dot type , 6 point)	•	•	•	•	•	•
AAAE1501	Recorder (chart type, 6", 24hr / 7day)	•	•	•	•	•	•
AAAE1502	Chart Recorder Paper (6", 60ea/1 package)	•	•	•	•	•	•
AAAE1503	Recorder (thermal line type)	•	•	•	•	•	•
AAAJ7001	Cryo Box, CRB-25 (PC, 1.2 to 2.0ml x 25 holes,)	•	•	•	•	•	•
AAAJ7002	Cryo Box, CRB-81S (PC, 1.2 to 2.0ml x 81 holes)	•	•	•	•	•	•
AAAJ7003	Cryo Box, CRB-81T (PC, 5.0ml x 81 holes)	•	•	•	•	•	•
AAAJ7011	Storage Box, SRB-100 (PP, 1.2 to 2.0ml x 100 holes)	• / -	• / -	• / -	-	-	-

for Medical Cooling

► Recorders


 Dot Recorder

 Chart Recorder

 Thermal Line Recorder

► Blood Bank Refrigerators

Cat. No.	Description	BSR-300	BSR-650
AAAE1517	Drawer Shelves - slide type (included guide rail)	•	-
AAAE1518		-	•
AAAE1501	Recorder (chart type, 6", 24hr / 7day)	•	•
AAAE1502	Chart Recorder Paper (6", 60ea/1 package)	•	•
AAAE1551	Auto Dialing Remote System	•	•
AAAJ7001	Cryo Box, CRB-25 (PC, 1.2 to 2.0ml x 25 holes,)	•	•
AAAJ7002	Cryo Box, CRB-81S (PC, 1.2 to 2.0ml x 81 holes)	•	•
AAAJ7003	Cryo Box, CRB-81T (PC, 5.0ml x 81 holes)	•	•
AAAJ7011	Storage Box, SRB-100 (PP, 1.2 to 2.0ml x 100 holes)	•	•

► Plasma Freezers

Cat. No.	Description	BSF-300	BSF-650
AAAE1517	Drawer Shelves - slide type (included guide rail)	•	-
AAAE1518		-	•
AAAE1501	Recorder (chart type, 6", 24hr / 7day)	•	•
AAAE1502	Chart Recorder Paper (6", 60ea/1 package)	•	•
AAAE1551	Auto Dialing Remote System	•	•
AAAJ7001	Cryo Box, CRB-25 (PC, 1.2 to 2.0ml x 25 holes,)	•	•
AAAJ7002	Cryo Box, CRB-81S (PC, 1.2 to 2.0ml x 81 holes)	•	•
AAAJ7003	Cryo Box, CRB-81T (PC, 5.0ml x 81 holes)	•	•

► Pharmacy Refrigerators

Cat. No.	Description	PSR-300	PSR-650
AAAE1511	Wire Shelves - flat type (included shelf bracket)	•	-
AAAE1512		-	•
AAAE1514	Wire Shelves - slide type (included guide rail)	•	-
AAAE1515		-	•
AAAE1517	Drawer Shelves - slide type (included guide rail)	•	-
AAAE1518		-	•
AAAE1501	Recorder (chart type, 6", 24hr / 7day)	•	•
AAAE1502	Chart Recorder Paper (6", 60ea/1 package)	•	•
AAAE1551	Auto Dialing Remote System	•	•
AAAJ7001	Cryo Box, CRB-25 (PC, 1.2 to 2.0ml x 25 holes,)	•	•
AAAJ7002	Cryo Box, CRB-81S (PC, 1.2 to 2.0ml x 81 holes)	•	•
AAAJ7003	Cryo Box, CRB-81T (PC, 5.0ml x 81 holes)	•	•
AAAJ7011	Storage Box, SRB-100 (PP, 1.2 to 2.0ml x 100 holes)	•	•



- / Autoclaves
- / Baths & Circulators
- / Desiccators
- / Furniture
- / Hoods
- / Incubators
- / Ovens
- / Pumps
- / Recirculating Coolers (Chillers)
- / Refrigerators & Freezers
- / Shakers
- / Heating & Cooling Blocks
- / Hotplates & Stirrers
- / Vortex mixers
- / Temperature Chambers
- / Temperature & Humidity Chambers
- / Pipettes
- / Plasticware
- / Ultrasonic Cleaners
- / Other Products